



Green Woods Charter School
THE WORLD IN OUR HANDS

WEDNESDAY BULLETIN

Wednesday, December 21, 2011

We hope that everyone has a happy and healthy winter break. School is closed this Friday, December 23, 2011 and will re-open on Tuesday, January 3, 2012. We will see you next year!

WE WILL STILL BE ACCEPTING CANNED GOOD DONATIONS THROUGH TOMORROW TO SEND TO NORTH LIGHT COMMUNITY CENTER.

Kid Stuff Coupon Book: PLEASE, if you are not going to purchase the book return it ASAP!!!! If there are any questions contact Amy Stallbaum at amys1218@comcast.net or 267-879-6slips X 100.

Vision Screening: The College of Optometry will be coming to Green Woods on January 19, 2012 and January 23, 2012 to perform vision screenings for students in grades K through 8. Look for more information and permission slips soon.

UPCOMING EVENTS

Middle School Class Trip – Franklin Institute – Thursday, December 22, 2011
Winter Break – Friday, December 23, 2011 through Monday, January 2, 2012
Arden Theater Trip – Grades 2&3, Wednesday, January 4, 2012

ATTACHMENTS

- THANK YOU LETTER!
- Winterfest at SCEE
- Pennypack Environmental Center
- Holiday Safety Tips
- Tea with Lady Sapphire
- Mathnasium
- Christmas Tree Recycling

PTA MEETING DATES

January 12, 2012 - February 9, 2012 - March 8, 2012 - April 12, 2012 - May 10, 2012

8TH GRADE DRESS DOWN DATES

April 13, 2012 - May 25, 2012

PIZZA DAY DATES

January 20, 2012 – February 24, 2012 – March 23, 2012 – April 13, 2012 – May 25, 2012

Many thanks!
Debi Vitello

I greatly appreciate your generosity in these economic times. especially Mrs. McMichael

Thank you for remembering our amazing staff! Thank you so much! I'm very appreciative!
Kimi B

Thank you so much!
Martha M
Thank you very much!
Mrs. Keough



Green Woods Charter School

THE WORLD IN OUR HANDS

December 19th, 2011

Wow! I was happily surprised to receive the very generous gift! Thank you so much!
Sandy Taylor

Thank you very much!
Gina K.

Thank you so much!
Happy Holidays!
- Nikki Penn

To the Green Woods Charter Parent Community,

The entire faculty and staff here at Green Woods Charter School cannot express how thankful we are for acknowledging our hard work and giving us such a generous and heartfelt gift for the holidays. Your children bring us great joy each and every day.

Thanks so much!
Kathleen
Debi
Thank you!
Brenda
Jeanette

We hope that you enjoy the time off with your children and have a restful winter break.

How very generous of you!
So appreciated
Nicole Stanke

Happy Holidays!

Thank you so much!
Happy Holidays!
Mrs. Coughlin

Thank you!
Happy Holidays!
Ms. Gladders

Sincerely,

Thank you so much!
Karen Reed
Thank you
Rebecca

Thank you!
Happy Holidays!
Mr. B

Green Woods Charter School Staff and Faculty

We love Awesome Parents!!!
Catherine
Zerwell

Your generosity was overwhelming. Many thanks!
Barbara Ward

Many thanks!
Merry Christmas & Happy Holidays
Mimi Hainwright

Thank you!
Happy Holidays
Lana

Thank you!
Mary Jo
Aldrey

Winterfest

A solstice celebration for the whole family

Hosted by WXPB Kids Corner's Kathy O'Connell
featuring favorite guests from the show

Thursday, December 22

7:00 — 9:30 pm

Schuylkill Center for Environmental Education

- Stargazing with Derrick Pitts of the Franklin Institute
- Nature walk with Mike Weilbacher, the "All-Natural Science Guy"
- Story time with Joe Hilton of the Free Library of Philadelphia
- Kitchen chemistry with Dr. Lisa Chirlan
- Nature reports from Jane Kirkland, author of Take a Walk® books
- Refreshments around the fire

\$5.00 per person — FREE to Schuylkill Center members

For more info, see scee@schuylkillcenter.org, 215-482-7300 ext. 110



8480 Hagy's Mill Rd.
Philadelphia, PA 19128
www.schuylkillcenter.org

Public Programs

Winter 2012

Pennypack

Environmental Center

Teen Advisory Council 2012 Kick-Off

Friday, January 6

5:00pm

We are looking for teens ages 13 and up to join our team. Come out for a night of fun, make new friends, and help plan activities for 2012. The number of teens we accept is limited. To register or for more information, please contact Stephanie Robinson at 215-685-0429 or stephanie.hoffer@phila.gov

Winter Wildlife Celebration and Open House

Saturday, January 14

9:00am-3:00pm

Wildlife Walk at 10am

Join us throughout the day for crafts, snacks and more.



Help us to trim trees around the center for the wildlife this winter by creating popcorn garland, decorating pinecones, and making other tasty treats. Learn more about what you can do in your own backyard

this winter to help wildlife, on a walk through the woods at 10am!!! *All ages welcome. This program is FREE.*

Beneath Philadelphia:

Examining Urban Archeology

Saturday, February 4

10:00am-3:00pm

Imagine Philadelphia. What do you see? The image is likely to be of sidewalks, busy streets, and buildings. But, Philadelphia is constantly changing. Often moving forward pushes the stories of residents and neighborhoods into obscurity. Today, archeological inquiries help us to remember the people who influenced the city's character. We'll examine Philadelphia, learn its secrets, its origins, and its journey into modernity. The presentation will include a talk, and a display of artifacts from the past. This is history with attitude! **Geared towards Adults and Teens. FREE**

Winter Wildlife Hike & Open House

Saturday, February 11

2:00pm

Explore the sanctuary to search for birds, mammals and the evidence they leave behind. The length of the walk depends on the weather and trail conditions. The Environmental Center will be open from 9:00am-3:00pm to explore. *FREE*

Winter Wonders: Junior Naturalist

Friday, February 17

2:00pm-4:00pm

Where have all the animals gone??? Children ages 8-12 yrs can join us for an afternoon of hiking followed by hot cocoa and snacks by the campfire. \$5.00 per child. **Please call to register.** Please Note: Public schools have early dismissal.

Maple Sugar Day at Fox Chase Farm

Saturday, March 3

12:00pm-4:00pm

Enjoy an afternoon of seasonal crafts, maple sugaring tours, storytelling, pancakes, syrup tasting, candy making and more at our annual festival. Pure Maple Syrup and Candy will be available for purchase. Fox Chase Farm is located on Pine Road, one mile north of Rhawn Street. Call for more information. \$3.00 adults and children.

Insects in Winter & Open House

Saturday, March 10

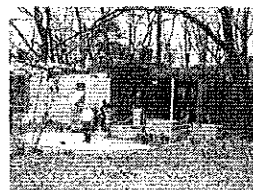
1:00pm

Insects have different strategies to survive the winter. A short talk will be followed by a walk to discover insects in winter. The Environmental Center will be open from 9:00am-3:00pm to explore. *FREE*

2nd Saturday Open House

Pennypack Environmental Center is open on the second Saturday of each month from 9:00am- 3:00pm. See the native fish aquarium, naturalistic mural, displays of local history and wildlife, bird feeders and resource library.

Unless noted, all programs begin at Pennypack Environmental Center. Pre-Registration is requested for all programs, except campfires. Space is limited! To register or for more information call: 215.685.0470.



Pennypack Environmental Center
8600 A Verree Road
Philadelphia, PA 19115
PHILADELPHIA
**PARKS &
RECREATION**



HOLIDAY SAFETY TIPS

Emotions run high during the holiday season, but there is no substitution for common sense. To make your holiday safe, look for and eliminate potential danger spots near candles, fireplaces, trees, and electrical connections. Add the following items to your shopping list – they don't cost anything, but they guarantee a safe holiday.

CONSIDER CHILDREN AND PETS

- Place poisonous seasonal plants, such as mistletoe, poinsettia, amaryllis, azalea, holly berries and boxwood, on high shelves so toddlers and pets cannot eat them.
- When you're entertaining, keep bite-sized appetizers, nuts, and grapes out of reach for small children. They are a choking hazard.
- Never leave small children or pets unsupervised in a room with lit candles, a burning fireplace, a wood-burning stove, or a portable heater.
- Keep matches, lighters, and candles out of reach of children.
- Secure Christmas trees so that toddlers and pets can't topple it. Move any pointed ornaments or decorations to high branches.
- Avoid trimmings that resemble candy or food. Children may be tempted to eat them.

CHRISTMAS TREES

- Many artificial trees are fire resistant. If you buy one, look for a statement detailing the duration of the protection.
- A fresh tree will stay green longer and be less of a fire hazard than a dry tree. To check for freshness, remember: a fresh tree is green, the needles are hard to pull from branches, the trunk butt is sticky with resin, and the needles don't break when bent between your fingers.
- Place the tree carefully away from fireplaces, radiators, or other heat sources. Don't let it block traffic or doorways.

- Cut off about two inches of the trunk and mount the tree in a sturdy, water-holding stand with wide-spread legs. Fasten large trees to walls or the ceiling with thin wires. They'll be nearly invisible and you won't worry about the tree falling over.
- Fill the base holder with water deep enough to cover the bottom of the tree. Keep it full while the tree is inside – remember that heated rooms dry out trees rapidly, which creates a fire hazard.

HOLIDAY LIGHTS

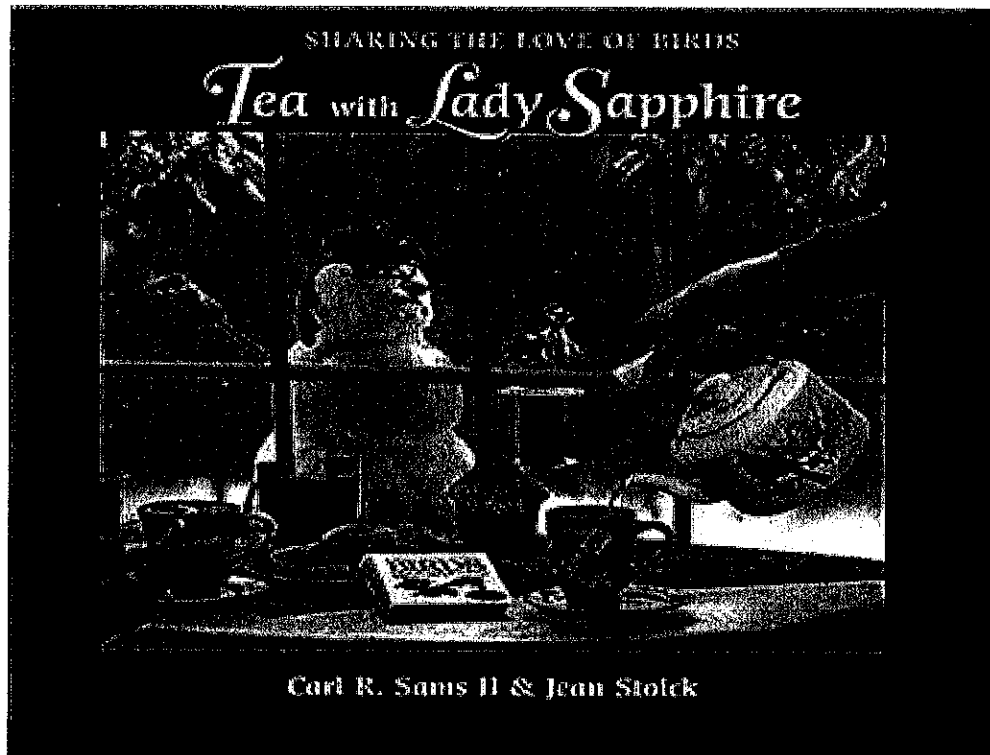
- Indoors or out, use only lights that have been tested for safety. These will have a "UL" label from the Underwriter's Laboratories.
- Check each set of lights, new or old, for broken cracked sockets, frayed or bare wires and loose connections. Replace any damaged lights.
- Don't use indoor lights outside and vice/versa. Fasten outdoor lights securely to tree or house walls to protect them from wind damage.
- Use no more than three sets of lights per single extension cord.
- Turn off all tree lights and other decorations when you go to bed or leave the house. The lights could short and start a fire.

CANDLES

- Never burn candles on a tree or near decorative greens on a mantel or table.
- Always use non-flammable holders.
- Keep candles away from wrapping paper and other decorations.
- Place candles where they cannot be knocked down or blown away.

FIREPLACES

- Don't burn evergreen in the fireplace. Their flames can flare out of control, sending sparks into the room.
- Remove all wrapping paper from the tree and fireplace areas immediately after the presents are opened. Don't burn the wrapping in the fireplace – a flash fire may result because wrappings can ignite suddenly and burn fiercely.



December 28

10am-12pm

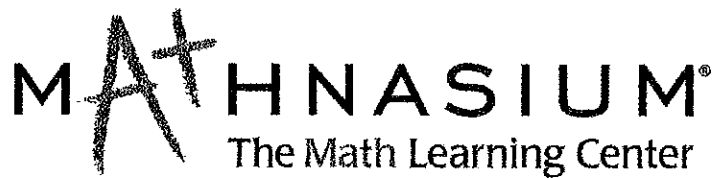
Bring your children and grandchildren out for a morning of storytelling and a short walk.
Followed by tea for the adults and hot chocolate for the kids.

In the new book, "Tea with Lady Sapphire," a
grandmother shares her love of birds and nature with her
Grandchildren.

Now you can too!!

Pre-Registration is Appreciated.

Pennypack Environmental Center
8600 A Verree Road
Philadelphia, PA 19115
(p) 215-685-0429
(f) 215-685-0469
(w) fairmountpark.org



December 15, 2011

Dear Greenwoods Charter School Parents,

My name is Indira Lawson, and I am pleased to announce my recent opening of a Mathnasium Learning Center in your neighborhood. **Mathnasium is a learning center where kids go year-round to improve their math skills.** We are highly specialized; we teach only math. We will

Dramatically Boost Your Child's Math Scores. Guaranteed.

Students attend two to three times a week for an hour. **Like at a gym, members attend to workout their math mind.** Our goal is to enhance your child's math skills, understanding of math concepts, and overall school performance. At the same time, **we build confidence**, yielding overwhelming results.

What distinguishes the Mathnasium Method?

- **Comprehensive written and oral evaluation**
A Mathnasium student takes a two-part diagnostic test – both written and oral. We use the results to create a learning plan customized to meet your child's individual needs.
- **Customized program for your child**
 - Highly trained instructors
 - Personal attention
 - Periodic assessments to keep your child on track
- **Results**
Your child's progress is measured by improved grades in school, advancement in our program, and most importantly, a growing love of mathematics.

I would like to invite you to stop by with your child. Bring this letter before the end of January, and receive **free registration (a \$50 value)** for your child. I look forward to meeting you, and to offering your child the **Opportunity to Succeed** in Math.

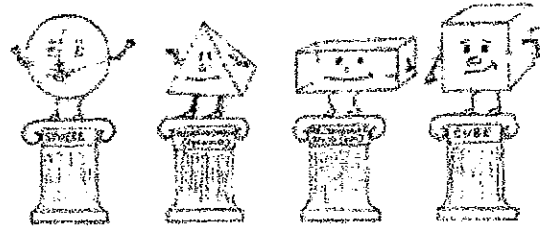
If you have any questions, or to schedule an appointment, please do not hesitate to call me at (267)437-2388.

MATHNASIUM®

The Math Learning Center

Sincerely,
Indira S. Lawson

Indira S. Lawson
Director,
Mathnasium of Andorra



MATHNASIUM®
The Learning Center

Mathnasium is a learning center in your neighborhood where kids go to catch up, keep up, and get ahead in math. The Mathnasium Method was developed over 30 years of hands-on instruction.

Sophisticated assessments shape a customized learning program for each student. At each lesson, passionate, specially-trained instructors provide one-on-one teaching to ensure success.

**"Unlimited Lessons
in December
for \$99!"**
(Over \$100 discount!)

There's a learning center near you:

Mathnasium of Andorra
8500 Henry Ave, Ste. #44, Philadelphia, PA 19128
Monday-Friday 3:00PM-8:00PM,
Saturday-10:00AM-4:00PM

visit us online - mathnasium.com

- Monthly memberships
- Friendly environment
- Homework Help
- SAT Prep, and more...

Call Today!
267-437-2388

(located in the Andorra Shopping Center,
across from Staples, next to Jenny Craig)

liver printed by: DYNAGRAPHIX.COM#215.744.1020



Christmas Tree-Cycling

Don't send your Christmas tree to the landfill - Tree-Cycle it! Bring your tree to the location listed below where it will be recycled into wood chips. The City of Philadelphia does not recycle trees left at the curb.

\$5 donation requested
All decorations must be removed
NO EARLY DROP-OFFS

Green IN Chestnut Hill (GrinCH)
Norwood Fontbonne on Sunset (OFF G'TOWN AVE)
Sunday January 8th 9:30am-12:30pm
or Gabbie's Garden at Chew and Mt Airy Ave from 1-4pm.

Participating Organizations: Northern Liberties Neighborhood Association, New Kensington Community Development Corporation, Friends of Eastern State Penitentiary Park, Green in Chestnut Hill, University City Green, University City District, Logan Square Neighbors Association, East Mt. Airy Neighbors, Friends of Marconi Plaza, Fishtown Neighborhood Association, Passyunk Square Civic Association, Lower Moyamensing Civic Association, East Passyunk Crossing Civic Association, Newbold Neighbors Association

Sponsored by:



BARTLETT
PUBLIC ENGINEERS

