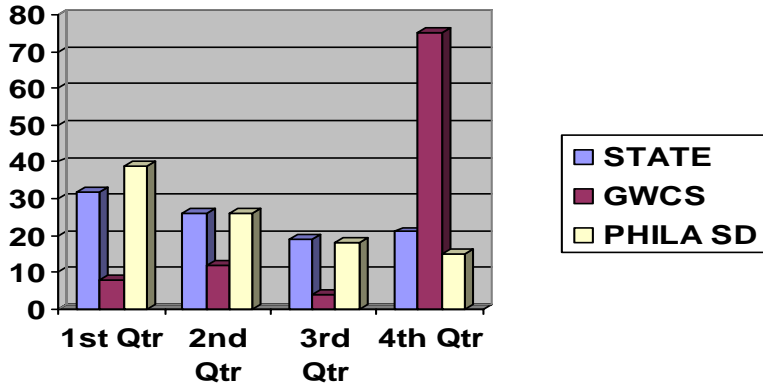


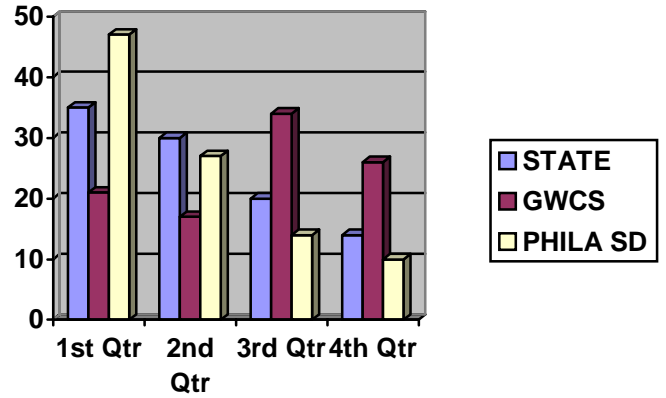
Below are the results of Green Woods Fall 2006 Science TerraNova exams for grades 3 to 8. Each bar graph shows the percentage of students from Green Woods (GWCS), The School District of Philadelphia, and the State scoring in the lowest (1st Qtr) quartile to the percentage scoring in the highest (4th Qtr) quartile.

A team of educational researchers from Arcadia University analyzed our TerraNova results. They did Chi-Square analyses comparing the quartiles of GWCS to the national quartiles and the state quartiles in Science and Mathematics. The Chi-Square results and summary of this report tell you the statistical probability that the observed results are by chance. If you were to read one of these statements prepared by Arcadia you would say that the probability of this distribution occurring by chance is less than .001 – or .1%. In summary, Arcadia concluded that our test results are directly related to our academic program.

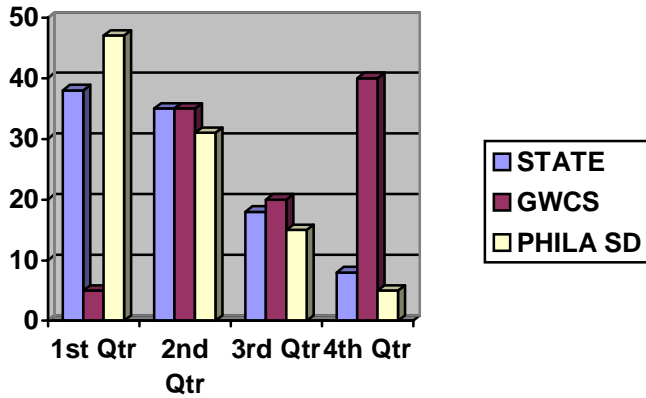
**Grade 3 Science**



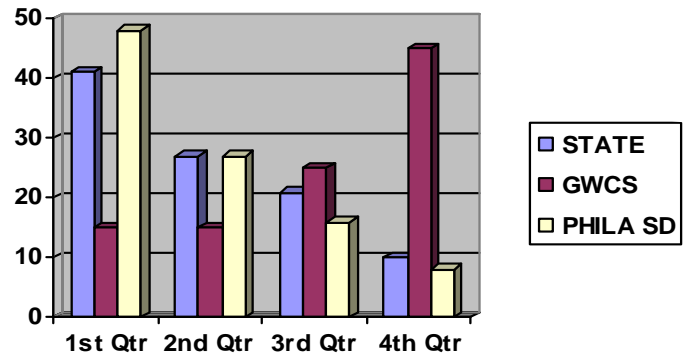
**Grade 4 Science**



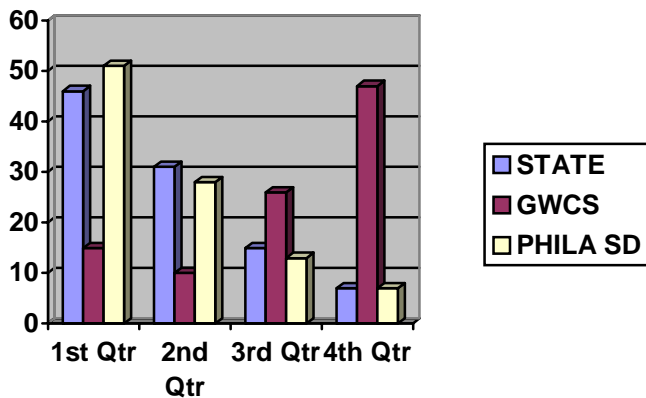
**Grade 5 Science**



**Grade 6 Science**



**Grade 7 Science**



**Grade 8 Science**

